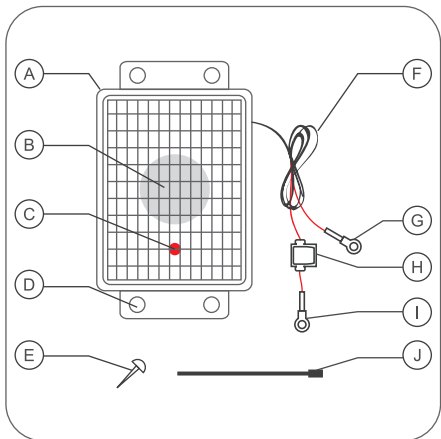
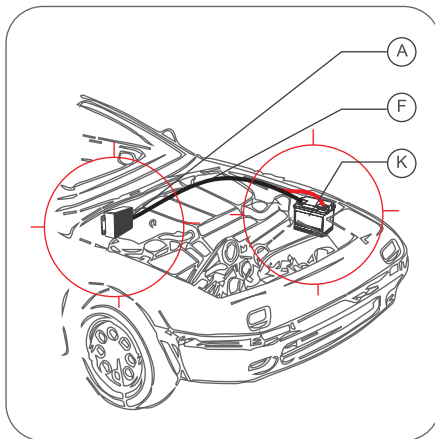




INSTALLATION MANUAL & WARRANTY INFORMATION

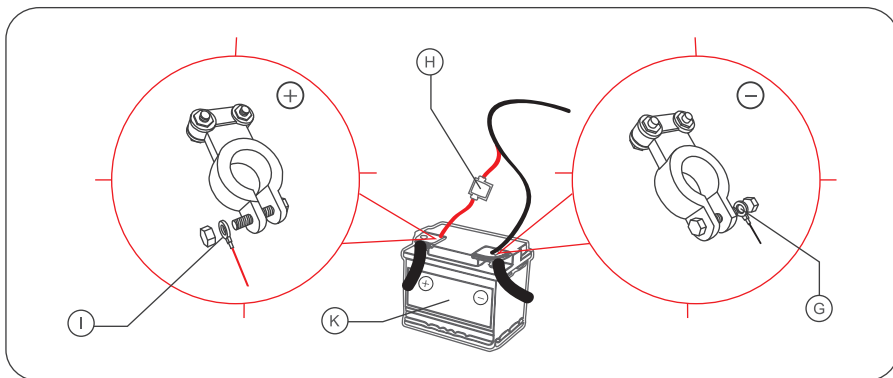


### UNBOXING CARCAT

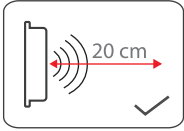


### INSTALLATION

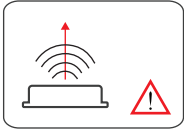
- Recommended mounting: Back or side wall of engine cavity, close to battery.
- Front grill of CARCAT should face hard metallic / plastic surfaces.



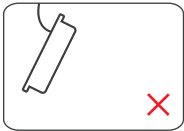
- A CARCAT
- B FRONT GRILL
- C POWER / BLINK LED
- D MOUNTING HOLE
- E MOUNTING SCREWS (x4)
- F CARCAT CABLES
- G CONNECTOR (BLACK INSULATION)
- H FUSE BOX
- I CONNECTOR (RED INSULATION)
- J CABLE TIES (x4)
- K CAR BATTERY



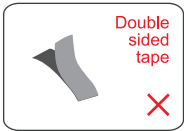
Ensure minimum clearance of 20 cm (~8 inches) between front grill of CARCAT and any other engine part.



Do not mount unit facing the bonnet, if it is covered with insulating foam.



Never keep CARCAT dangling loose or suspended by its cable.



Never affix CARCAT using a double sided tape. Direct contact with metallic / plastic surface enhances repelling effect.

## WIRING

- First remove fuse from fuse box (H).
- Connect (+) connection of CARCAT (I) to (+) of battery.
- Connect (-) connection of CARCAT (S) to (-) of battery.
- Use cable ties to tidy up the wiring.
- Re-insert fuse in fuse box (H).

## Troubleshooting / Health Check:

1. LED (C) blinks around every second and
2. Faint but audible BEEPs every 30 seconds

Note: The audible beep may not be heard in a very noisy environment.

## CARCAT - Ultrasound Rat/Rodent repellent

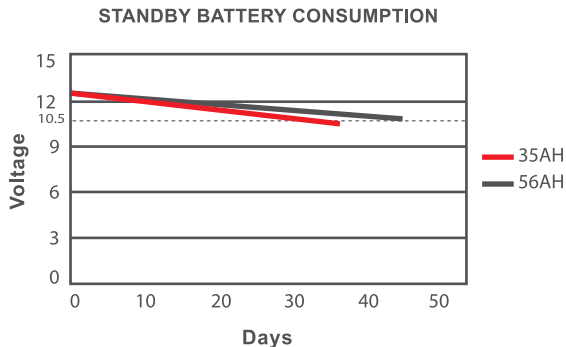
### Where to install:

The following points should be considered before choosing a location for mounting CARCAT.

- The unit should be mounted on a hard rigid surface and secured tightly to the mounting surface using the screws provided.
- Mounting should be such that the front grill of CARCAT always faces hard metallic / plastic surfaces.  
(This ensures multiple reflections of ultrasound waves. Ultrasound energy is quickly absorbed by soft materials like foam and rubber, drastically reducing performance.)
- The unit should be mounted away from hot surfaces or engine parts.

### Important:

- It is recommended to connect CARCAT directly to the battery as the unit should always be powered 'ON'.
- In case of existing rat / rodent infestation, the user is advised to park the vehicle at a different location for a few days post installation.



### Note :

The battery discharge curve does not include consumption of other equipment / devices like security systems which are also continuously powered by the battery.

Typical self-discharge rate of 4% per week is considered.

## WARRANTY CERTIFICATE

### **Limited warranty:**

CUSTOM LOGICS Pvt. Ltd. (CLPL) provides limited warranty for this device "CARCAT" (hereinafter referred to as "Product").

The warranty period for the product is 1 year from the date of purchase.

### **CLPL Warranty for CARCAT:**

Subject to the conditions of this limited warranty, CLPL warrants a product to be free from defects in design, material and workmanship at the time of its original purchase by you, and for a subsequent period of one (1) year.

This warranty does not apply in the event any of the following conditions are applicable:

- The product has been subjected to abnormal use or conditions, improper storage, exposure to excessive temperature, unauthorized repair (including but not limited to use of unauthorized spare parts in repairs), abuse, accidents, Acts of God, improper installation.
- CLPL has not been notified of the defect in the product during the applicable warranty period.
- The product serial no. code has been removed, defaced or altered.
- The product has been used with or connected to a power source other than a car battery or used otherwise than in manner intended.
- The product enclosure seals have been broken or show evidence of tampering.

